

# Bluetooth® Software User Guide

The patented Toledo software to enable wireless Bluetooth® connectivity is available in two options.



## Option 1

### Part No. 322404

Receiving dongle with complimentary Basic software



## Option 2

### Part No. 322405

Advanced software

(Part No. 322404 also required)

## Option 1: Part No. 322404

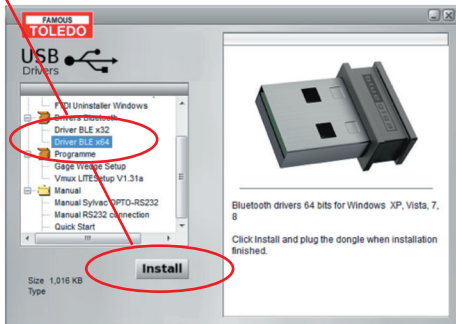
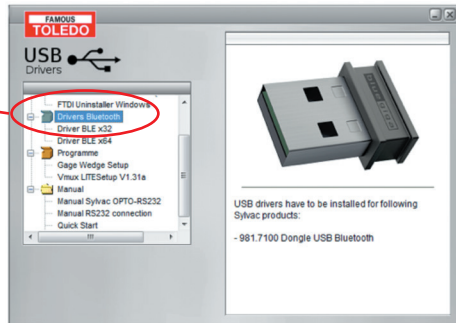
Receiving Dongle and Complimentary Basic Software includes Basic software installation CD and receiving dongle. Enables one instrument to be synchronised at one time.

Install Toledo CD, the installation program will automatically run.

It is required to install both the Bluetooth® driver and Vmux Software.

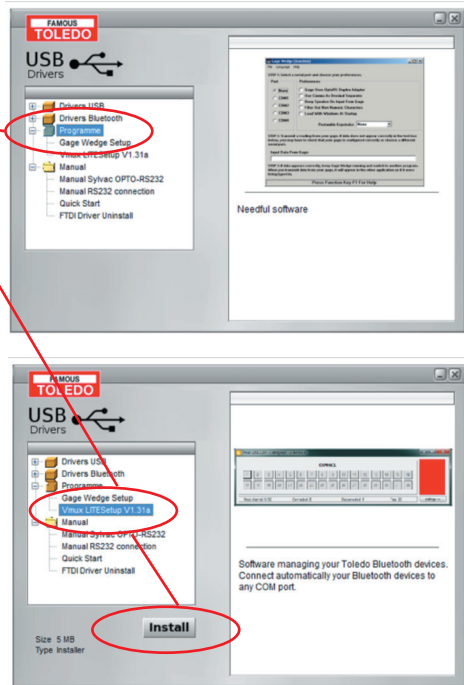
### Bluetooth® Driver Installation

1. Scroll down until you reach the "Drivers Bluetooth®" section
2. Select click either Driver BLE x32 or x64 depending on your windows operating system
3. Once either selection has been highlighted, an "Install" button will appear. Click the "Install" button to start the installation wizard
4. Follow the prompts from the installation wizard to complete setup of the Bluetooth® Driver



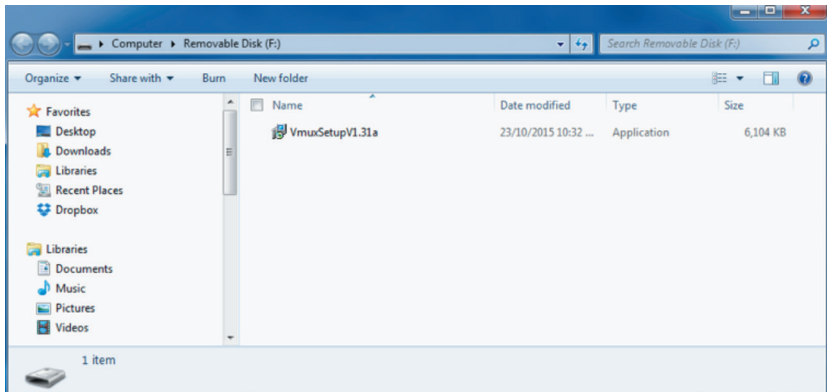
## Vmux Software Installation

1. Scroll down until you reach the “Programme” section
2. Select the Vmux LITESetup V1.13a
3. Once selection has been highlighted, an “Install” button will appear. Click the “Install” button to start the installation wizard.
4. Follow the prompts from the installation wizard to complete setup of the Vmux software



## Option 2: Part No. 322405

Includes Advanced software installation USB only. Requires purchase of receiving dongle separately (Part No. 322404 to enable wireless Bluetooth® connectivity). Enables up to 16 unique instruments to be synchronised at one time. Insert USB Key, double click on set up and follow the prompts.

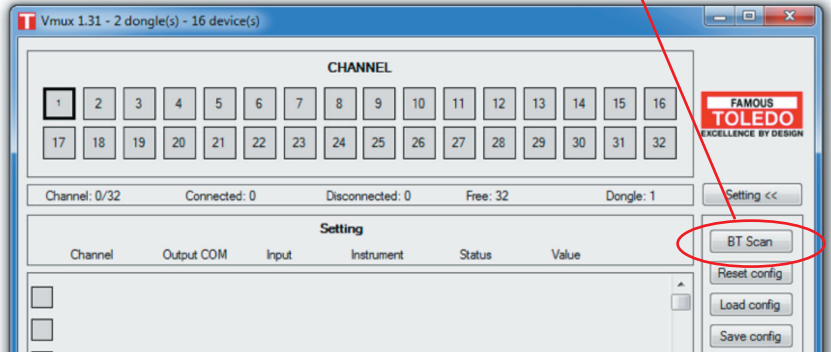


# Connecting an Instrument

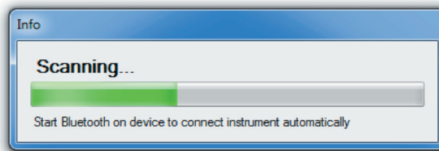
Activate Bluetooth® on the instrument via the Bluetooth® menu and select BT/ON. (Please note if the instrument has already been paired with another device select BT/RESET first, if the instrument is not reset it will not connect to the software).

Once the instrument is in “Advertising” mode, click the **BT Scan** button

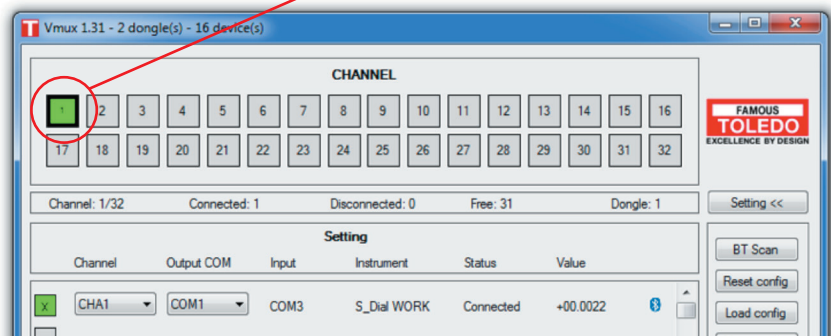
*Note: If the below screen does not appear automatically, click on the Setting button to expand the additional information*



The program will now begin to scan for active instruments; the progress is shown via the status bar:



The channel number will change to green once a connection has been established:

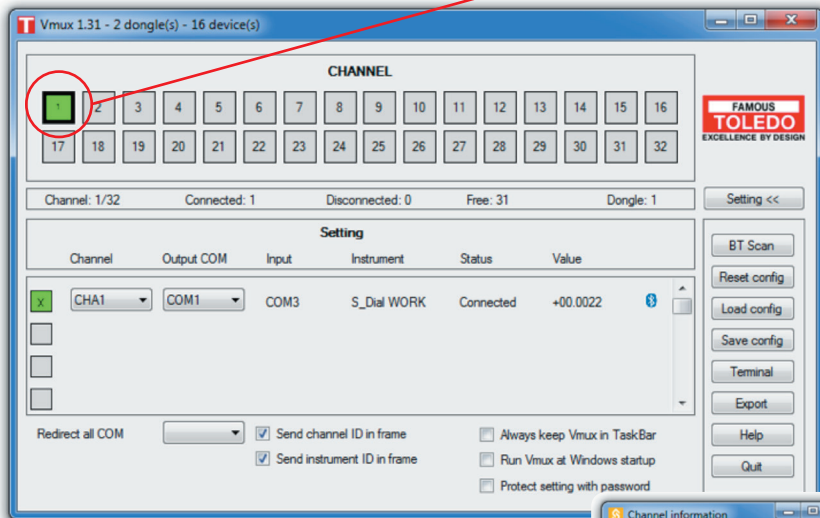


To connect additional instruments repeat the above procedure. The program will automatically select the next available channel.

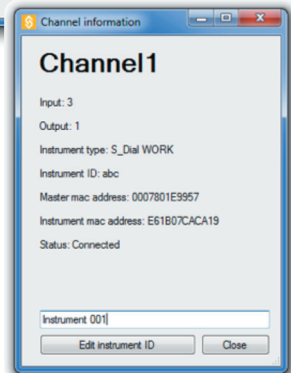
*Note: To connect more than 1 instrument the full Vmux software (advanced version) is required and is available for purchase Part No.322405*

# Changing a Paired Instrument ID

1. Double click on the channel of the paired instrument you wish to change

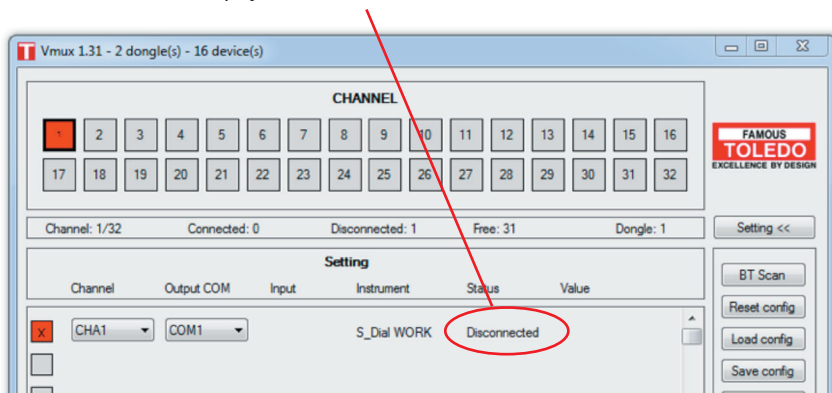


2. The Channel Information menu will pop up
3. The default ID number will display the factory name, to change the ID simply click in the text box at the bottom of the Channel Information menu and delete the current ID
4. Once the current ID has been deleted you can type your desired instrument name/ID
5. To save the changes, click the “Edit instrument ID” button, this will close the Channel Information menu and save the changes you have made (Please note: If you click the “Close” button the information will not be saved)

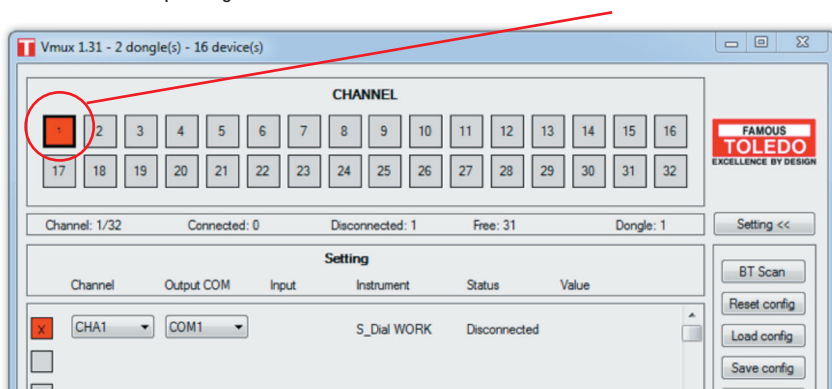


# Removing a Paired Instrument

1. Disable the Bluetooth® connection on the instrument by switching Bluetooth® active mode off and then turn the instrument off
2. The status will now display “**Disconnected**”



3. Click the corresponding cross next to the active channel in the Vmux software

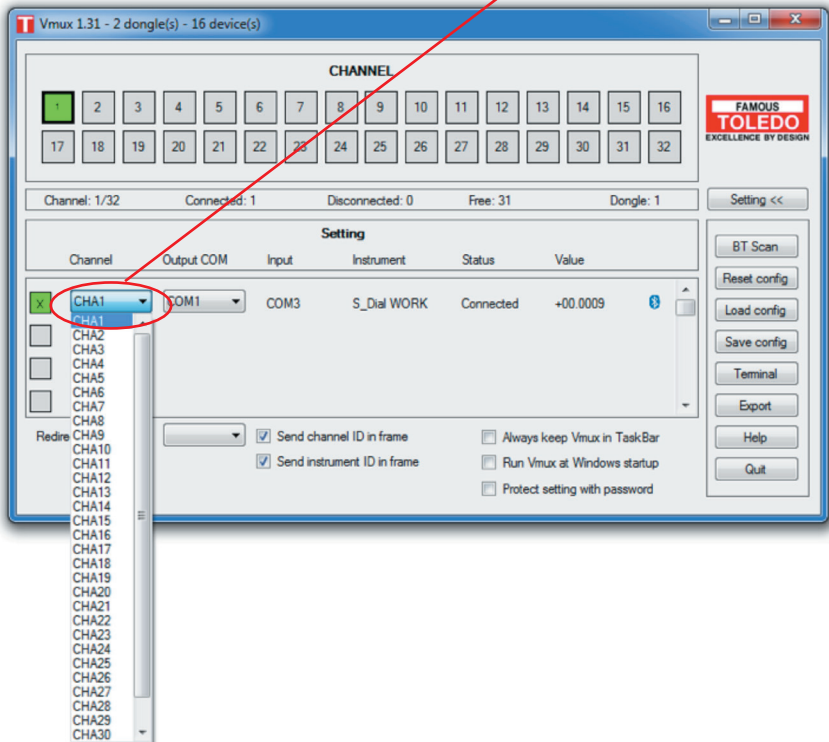


The instrument is now no longer paired with the Vmux software.

*Note: The instrument will need the bluetooth connection to be reset if pairing is required with another device*

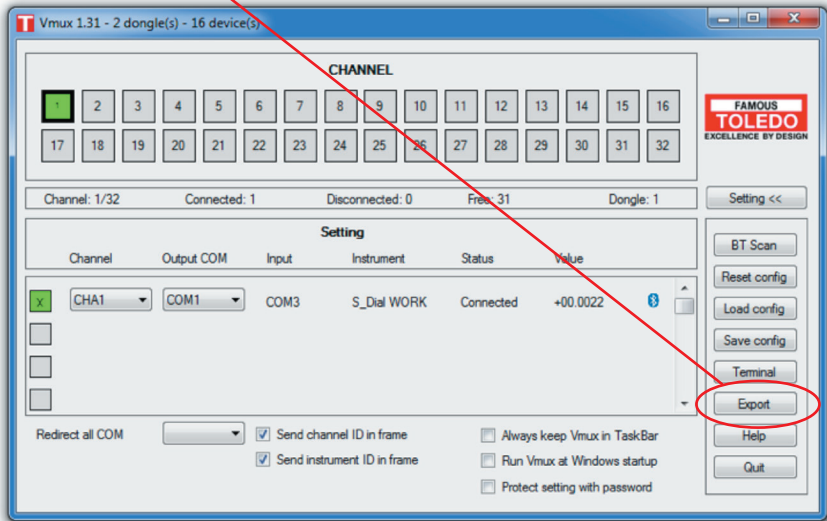
# Changing a Channel

1. Click on the channel to be changed, a dropdown list will appear
2. Select the desired available channel, the change will be made instantly

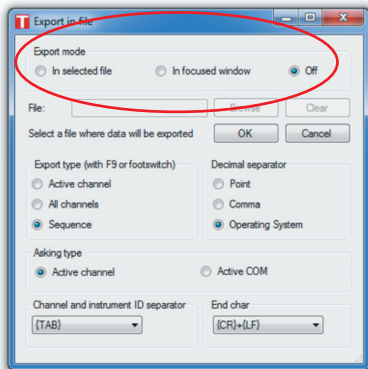


# Exporting Data

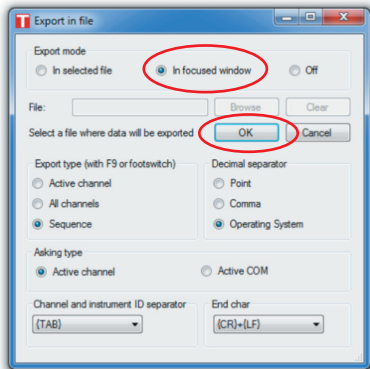
1. Click on the “Export” Button to open the export configurations menu



2. Data can be exported in two ways; you can browse for a selected file or use a file that is currently open. This can be changed by selecting the desired export mode

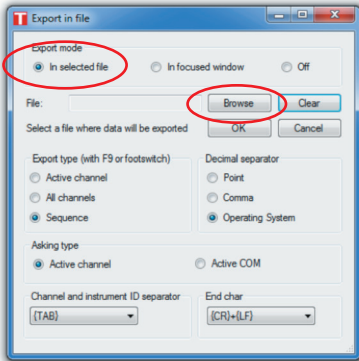


3. To use a file that is currently open, select “In focused window” then click “OK” to confirm your choice. The export configurations menu will automatically close and you can begin to export data



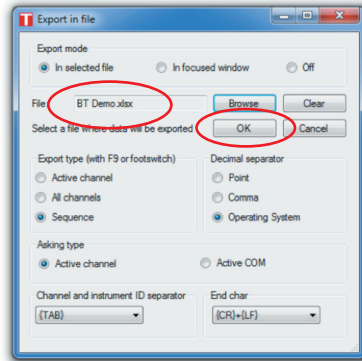


4. To use an existing file, select **“In selected file”**. The **“Browse”** button will now be enabled. By clicking the **“Browse”** button you change search for an existing file.



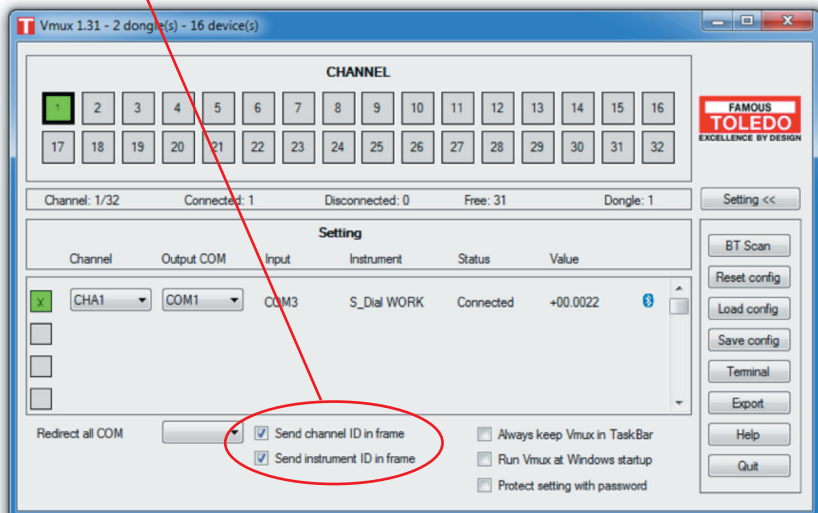
5. Once an existing file has been selected it will appear in the export configurations menu.

6. Click **“OK”** to confirm your choice of file. The export configurations menu will automatically close and will open the destination file that you have selected.



7. You can have the option of exporting the channel ID and the instrument ID with the recorded data. This is handy if you have multiple instruments connected as it provides a means of tracking what instrument recorded a particular value

8. These options can be turned on or off by simply clicking the highlighted square on the main menu



## Exporting Data cont.

9. The exported data will be displayed in an Excel spreadsheet as per below:

**With Channel ID clicked only:**

	A	B	C	D
1	CHA1	3.1879		
2	CHA1	3.1908		
3	CHA1	4.1890		
4	CHA1	4.7895		
5	CHA1	4.7895		
6	CHA1	5.0499		
7	CHA1	4.7734		
8				
9				
10				
11				

**With Instrument ID clicked only:**

	A	B	C
1	Instrument 001	3.1879	
2	Instrument 001	3.1908	
3	Instrument 001	4.1890	
4	Instrument 001	4.7895	
5	Instrument 001	4.7895	
6	Instrument 001	5.0499	
7	Instrument 001	4.7734	
8			
9			

**With both Channel and Instrument ID clicked:**

	A	B	C
1	CHA1	Instrument 001	3.1879
2	CHA1	Instrument 001	3.1908
3	CHA1	Instrument 001	4.1890
4	CHA1	Instrument 001	4.7895
5	CHA1	Instrument 001	4.7895
6	CHA1	Instrument 001	5.0499
7	CHA1	Instrument 001	4.7734
8			
9			

**Without either Channel or Instrument ID clicked:**

	A	B	C
1	3.1879		
2	3.1908		
3	4.1890		
4	4.7895		
5	4.7895		
6	5.0499		
7	4.7734		
8			

# Toledo Vmux Overview

The screenshot shows the Toledo Vmux software interface. At the top, a title bar reads "Vmux 1.31 - 2 dongle(s) - 16 device(s)". Below this is a "CHANNEL" section with a grid of 32 numbered buttons (1-32). Button 1 is highlighted in green. To the right of the grid is the "FAMOUS TOLEDO EXCELLENCE BY DESIGN" logo. Below the grid, a status bar shows: "Channel: 1/32", "Connected: 1", "Disconnected: 0", "Free: 31", and "Dongle: 1". A "Setting <<" button is on the right. The main "Setting" section has a table with columns: Channel, Output COM, Input, Instrument, Status, and Value. The table contains one row: Channel: CHA1, Output COM: COM1, Input: COM3, Instrument: S\_Dial WORK, Status: Connected, Value: +00.0022. Below the table are checkboxes for "Send channel ID in frame" and "Send instrument ID in frame", both checked. At the bottom, there are checkboxes for "Always keep Vmux in TaskBar", "Run Vmux at Windows startup", and "Protect setting with password". On the right side, a vertical menu contains buttons: "BT Scan", "Reset config", "Load config", "Save config", "Terminal", "Export", "Help", and "Quit".

Channel List

Status

Value

Bluetooth® Scan Button

Reset Configuration Menu

Load Configuration Menu

Save Configuration Menu

Terminal Menu

Export Configuration Menu

Help Menu

Channel

Output

Input

Instrument

For further technical information please contact Tridon Customer Service on 1300 362 263



322404 & 322405 MAN © Copyright TRIDON AUSTRALIA PTY. LTD. 2016

A.C.N. 001 398 698 Reproduction of this manual in part or full is not permitted without written approval. Illustrations in this manual are for identification purposes only and there may be slight variations between the illustration and actual product. Whilst every effort has been made to ensure that the information contained in this catalogue is accurate at the time of printing, TRIDON AUSTRALIA PTY LTD will not accept responsibility should any inaccuracies be contained herein.

