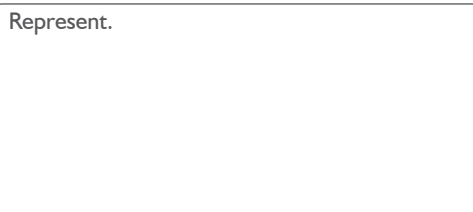


BS98940 STEERING HEAD BEARING INSTALLER TOOL SET



APO TOOL INTERNATIONAL LTD.

No.38 Ping An St, Changhua, Taiwan 50055
T: +886 4 7514888 / F: +886 4 7524888
Website : www.bikeservice.com.tw
E-mail : service@bikeservice.com.tw



RELEVANT PRODUCTS OF STEERING HEAD BEARING SERVICE



BS4201
Steering Bearing Outer Race
Remover Tool



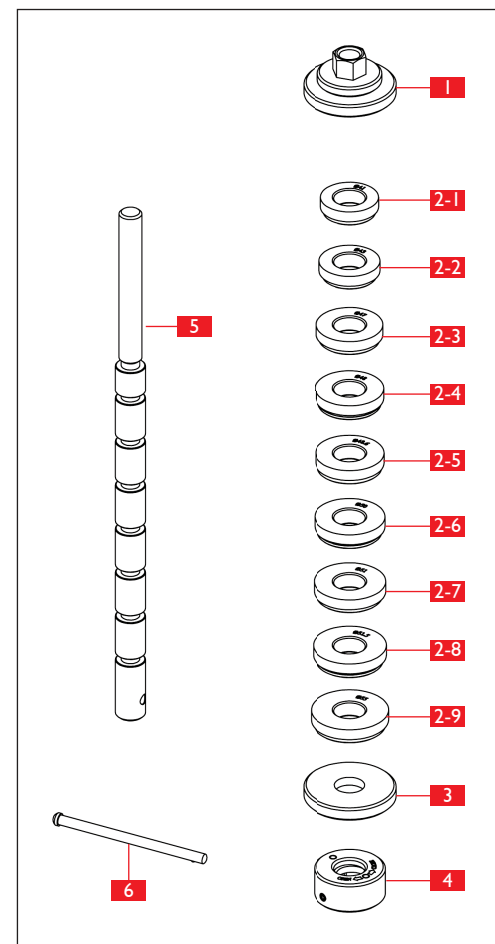
BS9893
Steering Tube Bearing
Installer Tool Set



BS9892
Steering Tube Bearing Puller

BS98940 Steering Head Bearing Install Kit provides a proper way to install steering head bearing with diameter sizes from 41mm to 55mm. Please read instruction thoroughly prior to use.

COMPONENT IDENTIFICATION



Item.	Part No.	Description
1	BS98940-A	Press Cap
2-1	BS98940-13	ø41mm POM press ring Honda
2-2	BS98940-14	ø43mm POM press ring Suzuki, Yamaha
2-3	BS98940-15	ø47mm POM press ring Kawasaki, Suzuki, Yamaha Honda, Triumph, Montesa
2-4	BS98940-16	ø48mm POM press ring Suzuki, Yamaha, Kawasaki
2-5	BS98940-17	ø48.6mm POM press ring Honda
2-6	BS98940-18	ø50mm POM press ring Honda, KTM, Husaberg Buell, Husqvarna, Victory Harley
2-7	BS98940-19	ø51mm POM press ring Honda, TM
2-8	BS98940-20	ø51.5mm POM press ring Kawasaki, Suzuki, Yamaha Honda, Triumph
2-9	BS98940-21	ø55mm POM press ring Kawasaki, Suzuki, Yamaha Honda, Triumph, TM Aprilia, Ducati, Moto Guzzi
3	BS98940-06	Press Plate
4	BS98940-B	Rotate-Locking Holder
5	BS98940-01	Central Axle
6	S0008204	T Bar

PRODUCT FEATURE

- Special design POM Press Ring prevents steering head and bearing from damage during operation.
- Special design Rotate-Locking Holder provides an easy and adjustable operation.
- LIGHTWEIGHT design provides user a effort-saving operation.
- Highly recommend to use 21mm ratchet wrench with BS98940 for easier and accurate operation.
- Both Press Cap & Rotate-Locking Holder side can well operate the installation work which provides more application in small working environment.
- One-man Easy Operation.

TOP STEERING HEAD BEARING INSTALLATION

1. Choose a corresponding size of POM Press Ring before operation. (A. 1)
2. Install Rotate-Locking Holder through Central Axle. Adjust the holder to a suitable position and rotate counter clockwise to lock into the groove on the Central Axle. (A. 2-1)
Please make sure the holder is completely locked on the axle, and the surface mark is alignment with the scale of Central Axle. (A. 2-2)
3. Combine Press Plate on the holder (A. 3-1) and install the Central Axle in the steering head frame from the bottom side. (A. 3.2)
4. Holding the axle and, step by step, install the replacement steering head bearing, the chosen POM Press Ring and the Press Cap on the Central Axle from the screw side. (A. 4)
5. Driving the Press Cap by 21mm ratchet wrench or suitable tool to press the replacement steering until well positioned and installed. (A. 5)
6. In case there is idle situation during operation, please use T-bar to hold the axle spin for better operation. (A. 6)



BOTTOM STEERING HEAD BEARING INSTALLATION

1. Choose a corresponding size of POM Press Ring before operation. (B. 1)
2. Slightly loosen the Press Cap (B. 2-1), rotate clockwise to unlock and release the Rotate-Locking Holder and Press Plate from Central Axle. (B. 2-2)
3. Step by step, install the replacement steering head bearing, the chosen POM Press Ring, Press Plate and Rotate-Locking Holder on the Central Axle. (B. 3-1)
Adjust the holder to a suitable position and rotate counterclockwise to lock into the groove on the Central Axle. Please make sure the holder is completely locked on the axle. (B. 3-2)
4. Driving the Press Cap by 21mm ratchet wrench or suitable tool to press the replacement steering until well positioned and installed. (B. 4)
5. In case there is idle situation during operation, please use T-bar to hold the axle spin for better operation. (B. 5)



Important

1. Make sure the Rotate-Locking Holder is completely locked on the axle before operation in order to avoid any damage.
2. (Unlock/Open) Clockwisely rotate the holder for Unlock/Open status. The Align Pin does not level at the Central Axle Flat. (P. 1)
3. (Lock/Close) Counterclockwisely rotate the holder for Lock/Close status. The Align Pin levels at the Central Axle Flat. (P. 2)