

Edition 1  
2019

# NEW PRODUCT BULLETIN

Latest additions to Tridon automotive range including oil cartridge and automotive caps, switches and sensors, thermostats and wiper blades.

## TFL244D & TFNL244D Fuel Caps

**MUST STOCK ITEM**



TFL244D



TFNL244D

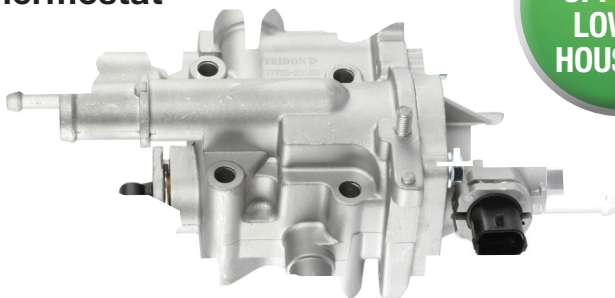
### Suits Popular Ford & Toyota Commercial Vehicles

- Yellow for easy diesel identification
- Direct OEM replacement

#### Application

Make	Model	Engine Size	Year
Ford	Ranger	2.2L, 3.2L	09/11 - Current
	Hilux	2.4L- 3.0L	08/08 - Current
Toyota	Landcruiser	4.5L	Current
	Prado	3.0L	11/09 - Current

## TT725-221K Thermostat



**INCLUDES UPPER & LOWER HOUSING!**

**Application:** Holden Barina RM, Cruze JG 1.8L, Cruze JH 1.6L & 1.8L & Trax TJ 1.8L

## TPS165 Power Steering Pressure Switch



**POPULAR PART**

**Application:** Toyota Landcruiser, Camry, Corolla, Kluger, Hilux, Aurion & many more

**TCC001  
Oil Cartridge Cap**



**Application:** VW Golf GT 1.4L  
2007 - 2009

**TCC002  
Oil Cartridge Cap**



**Application:** Audi A3, A4, A6  
2005 - 2015

**TCC003  
Oil Cartridge Cap**



**Application:** VW Golf & Jetta,  
1.4L - 1.6L

**TCC004  
Oil Cartridge Cap**



**Application:** Alfa Romeo 159,  
Brera & Giulietta

**TCC005  
Oil Cartridge Cap**



**Application:** Alfa Romeo  
Giulietta JTD

**TCC006  
Oil Cartridge Cap**



**Application:** Alfa Romeo Mito,  
1.3L, 08/08 - 01/12

**TCC007  
Oil Cartridge Cap**



**Application:** Renault Laguna,  
Koleos, Megane, Master, Traffic

**TCC008  
Oil Cartridge Cap**



**Application:** Holden Barina, Cruze

**TCC009  
Oil Cartridge Cap**



**Application:** Holden Astra, Captiva,  
Malibu, Vectra, Zafira

**TCC010  
Oil Cartridge Cap**



**Application:** Ford Fiesta, Focus,  
Kuga

**TCC011  
Oil Cartridge Cap**



**Application:** BMW 125i, 135i, 220i,  
228i, 320i, X5, X6, Z4

**TCC012  
Oil Cartridge Cap**



**Application:** BMW 320i, 325i, 330i  
2000 - 2006

**TCC013  
Oil Cartridge Cap**



**Application:** Mercedes C Class  
2000 - 2004

**TCC014  
Oil Cartridge Cap**



**Application:** Volvo S40, V40,  
S60, V60, S80, V80, XC70 & SC90

**TCC015  
Oil Cartridge Cap**



**Application:** Lexus IS250, IS350,  
GS450H

## TCC016 Oil Cartridge Cap



**Application:** Toyota Aurion, Rav4 & Tarago

## TCC017 Oil Cartridge Cap



**Application:** Toyota FJ Cruiser, Kluger, Prado

## TCC018 Oil Cartridge Cap



**Application:** Toyota Corolla, Prius

## TCC019 Oil Cartridge Cap



**Application:** Hyundai Santa Fe & Tucson, Kia Sorento

## TCC020 Oil Cartridge Cap



**Application:** VW Jetta, Multivan, Transporter

## TCC021 Oil Cartridge Cap



**Application:** Audi A1, A3, A4, VW Golf, Passat & Touareg

## TCC022 Oil Cartridge Cap



**Application:** Audi A4 & A5

## TCC023 Oil Cartridge Cap



**Application:** Toyota Rav4 2.5L

## TCC024 Oil Cartridge Cap



**Application:** Toyota Landcruiser URJ202, 4.6L

## TCC025 Oil Cartridge Cap



**Application:** Mazda 3, Mazda 6, CX-7, Ford Escape

## TCC026 Oil Cartridge Cap



**Application:** Holden Commodore VZ - VF, 3.0L, 3.6L

POPULAR  
VEHICLES

## TCC027 Oil Cartridge Cap



**Application:** Holden Cruze JH 2.0L & Captiva CG 2.2L

## TCC028 Oil Cartridge Cap



**Application:** Holden Barina & Combo Van XC

## TCC029 Oil Cartridge Cap



**Application:** Holden Astra, Cascada & Cruze

## TCC030 Oil Cartridge Cap



**Application:** Holden Astra & Barina 1.8L, Vectra 2.5L, 2.6L



**TCC031  
Oil Cartridge Cap**



**Application:** Holden Cruze & Epica 2.0L

**TCC032  
Oil Cartridge Cap**



**Application:** Mercedes C, CLC, CLK, E, SLK Class & Sprinter 1.8L & 3.0L

**TCC033  
Oil Cartridge Cap**



**Application:** Toyota Landcruiser 79 Series, 200 Series Diesel

**TCC034  
Oil Cartridge Cap**



**Application:** BMW 116i, 118i, 120i, 316Ti, 318Ci, 318i, 318Ti, 320i, X1 & Z4

**TCC035  
Cartridge Cap Oil Filter**



**Application:** Mercedes A, B, C, CLA, E, GLA, SLC, SLK Class 1.6L & 2.0L

**TCC036  
Oil Cartridge Cap**



**SUITS  
POPULAR  
VEHICLES**

**Application:** Audi A4, A5, A6, Q5 & Q7

**TCC037  
Oil Cartridge Cap**



**Application:** Mercedes A, B, C, CLA, CLS, E, GLA, ML, S, SLK & Sprinter 1.8L & 2.1L

**TCC038  
Oil Cartridge Cap**



**Application:** Mercedes C, CLS, E, G, GL, GLE, GLS, ML, R, S Class, Sprinter, Viano & Vito 3.0L Models

**TCC039  
Oil Cartridge Cap**



**Application:** BMW 1, 2, 3 & 4 Series, X3, X4, X5 & Z4

**TCC040  
Oil Cartridge Cap**



**Application:** Mercedes C, E, SLK Class 1.8L

**TCC041  
Oil Cartridge Cap**



**Application:** Audi A1, A3, A4, A5, Q3, Q5, S3, TTS, Skoda Octavia, Superb, VW Golf, Passat & Tiguan

**TCC042  
Oil Cartridge Cap**



**Application:** Nissan Navara D22 & Patrol GU 3.0L

**TCC043  
Oil Cartridge Cap**



**Application:** Holden Commodore ZB 2.0L

**TCC044  
Oil Cartridge Cap**



**MUST  
STOCK  
ITEM**

**Application:** Ford Everest & Ranger, Mazda BT50 2.2L & 3.2L

**TCC045  
Oil Cartridge Cap**



**Application:** Holden Colorado & Colorado 7 RG, 2.5L & 2.8L

## TAS001 Air Con Switch



**Application:** Holden Commodore & HSV VE, VF, WM, Colorado RG

## TAS002 Air Con Switch



**Application:** Ford Falcon AU, FG, Focus LS-LW, Territory SZ

## TAS003 Air Con Switch



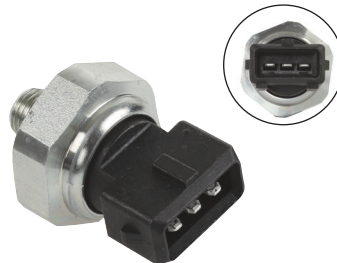
**Application:** Jeep Cherokee KJ, Grand Cherokee WH & WK, Chrysler 300C

## TAS004 Air Con Switch



**Application:** Jeep Grand Cherokee WG & WJ

## TAS005 Air Con Switch



**Application:** Mercedes A, C, E, CL, CLK, SL, SLK Class, Sprinter and Vito

## TAS006 Air Con Switch



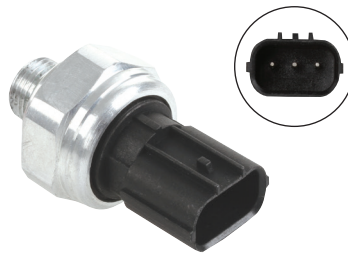
**Application:** Nissan Pulsar B17, C12, N16, Navara D40, Pathfinder R51

## TAS007 Air Con Switch



**Application:** Toyota Corolla, Camry, Prado, Prius, Hilux, Rav4, Landcruiser

## TAS008 Air Con Switch



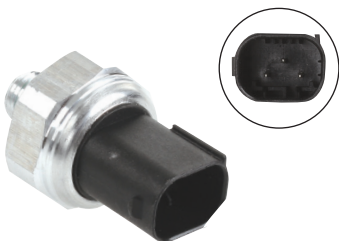
**Application:** Honda Accord CP-CR, Civic FD & FK, CR-V RE, Odyssey RB1

## TAS009 Air Con Switch



**Application:** Hyundai i30 FD GD, i20 PB, iLoad TQ-V, Getz TB, Tucson TLE

## TAS010 Air Con Switch



**Application:** BMW Series 1 - 7, X1, X3, X4, X5, X6 & Z4

## TAS011 Air Con Switch



**Application:** Audi A4 B7 1.8 - 3.0L

## TAS012 Air Con Switch



**Application:** Holden Captiva CG 2.4L

**TAS013  
Air Con Switch**



**Application:** Mercedes B, G, GLE, ML & R-Class

**TAS014  
Air Con Switch**



**Application:** VW Golf 6&7, Audi A3, A4, Q5, Skoda Octavia

**TAS015  
Air Con Switch**



**Application:** VW Golf 5, Polo, Toureg, Transporter, Amarok, Audi Q7, Skoda Octavia

**TAS016  
Air Con Switch**



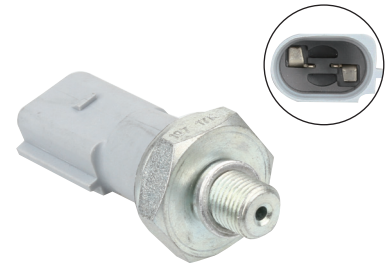
**Application:** Volvo S80, S40, C30, V60, XC60, XC70

**TPS168  
Oil Pressure Switch**



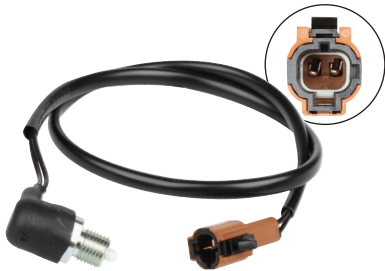
**Application:** Assorted Audi & VW 1.4L, 2.0L vehicles

**TPS169  
Oil Pressure Switch**



**Application:** Audi A4, A6, A7, A8, Q5, Q7 & SQ5 3.0L models

**TRS133  
Reverse Light Switch**



**Application:** Fits popular Subaru Forester, Impreza, Liberty, Outback WRX & XV, 2.0L vehicles

**TCAS413  
Cam Angle Sensor**



**Application:** Hyundai i30 GD 1.8L, 2.0L & other popular models

**TCAS414  
Cam Angle Sensor**



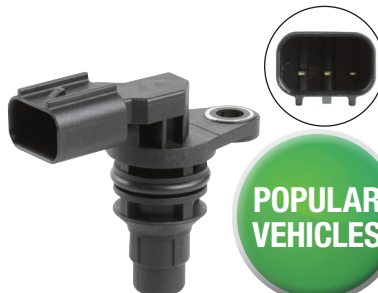
**Application:** Ford Ranger PX 2.2L, 3.2L & Transit VM, VN, VO Diesel

**TCAS415  
Cam Angle Sensor**



**Application:** Holden Astra PJ 2.0L, Captiva CG 2.4L & Malibu EM 2.4L

**TCAS416  
Cam Angle Sensor**



**Application:** Mazda 3, Mazda 6, CX-7, Ford Escape

**TAF169  
Mass Air Flow Meter**



**Application:** Holden Commodore VZ, 5.7L, 6.0L 12/01 - 11/07



# NEW PRODUCT BULLETIN

## TT823-203 Thermostat



**Application:** Jeep Grand Cherokee WK,  
3.6L, 02/11-02/17

## CP15100L Lever Release Recovery Cap



**Pressure:** 15 (PSI), 100 (kPa)  
**Connection Type:** Large Bayonet

## TRB027 Rear Wiper Blade

OVER  
150,000  
VOR



**Application:**  
Hyundai i30, GD,  
11/2012 - Current

## MRJ28-2 Rubber Refill Combo

**Length:**  
700mm (28")  
**Premium**  
8.5mm Refill



**Application:**  
Toyota  
Landcruiser  
200 Series

## TMR007 Rubber Refill Combo

**Length:**  
650mm (26")  
450mm (18")  
Direct fit only, cannot  
be cut to length



**Application:**  
Honda Civic  
FK Hatchback  
07/12 - Current

# TRIDON FlexConnect®

New FlexConnect® connectors are available in pairs and packs of 10

UNIQUE  
TO  
TRIDON!

## MB-2 & MB-10 FlexConnect® MB



To suit modern Mercedes Benz vehicles

## NX-2 & NX-10 FlexConnect® NX



To suit modern Toyota and Lexus vehicles

## RN-2 & RN-10 FlexConnect® RN



To suit modern Renault and Mini vehicles

# TRIDON FlexBlade® New connector styles



- Latest in European wiper technology
- Extended range providing full vehicle coverage, ten connection styles now available
- Increased performance over traditional steel blades using flexor strip for even pressure distribution across the windscreen

## FlexBlade® MB

To suit modern Mercedes Benz vehicles



Part No.	Length
<b>TFB177</b>	475mm (19")
<b>TFB180</b>	550mm (22")
<b>TFB181</b>	600mm (24")
<b>TFB182</b>	650mm (26")

## FlexBlade® NX

To suit modern Toyota, Mazda and Lexus vehicles



Part No.	Length
<b>TFB186</b>	400mm (16")
<b>TFB188</b>	450mm (18")
<b>TFB190</b>	500mm (20")
<b>TFB193</b>	600mm (24")
<b>TFB194</b>	650mm (26")

## FlexBlade® RN

To suit modern Renault and Mini vehicles



Part No.	Length
<b>TFB197</b>	380mm (15")
<b>TFB202</b>	500mm (20")
<b>TFB205</b>	600mm (24")
<b>TFB206</b>	650mm (26")

## FlexBlade® BY

To suit many Citroën, Renault, Mini and SAAB vehicles



Part No.	Length	Part No.	Length
<b>TFB208</b>	350mm (14")	<b>TFB214</b>	500mm (20")
<b>TFB210</b>	400mm (16")	<b>TFB215</b>	530mm (21")
<b>TFB212</b>	450mm (18")	<b>TFB216</b>	550mm (22")
<b>TFB213</b>	475mm (19")	<b>TFB217</b>	600mm (24")
		<b>TFB218</b>	650mm (26")
		<b>TFB219</b>	700mm (28")