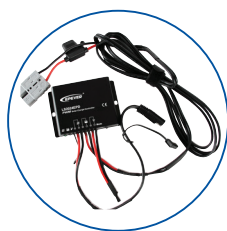


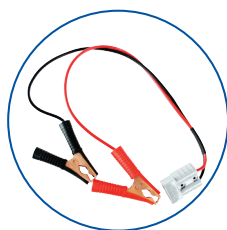
FOLDING SOLAR PANEL

- IP67 Waterproof regulator included
- Lightweight and flexible
- Portable folding panel
- Ideal power source for all kinds of camping and outdoor activities



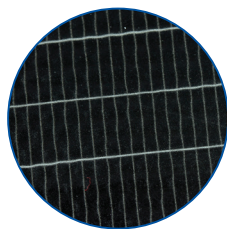
12V/24V Waterproof Solar Controller

- IP67 Waterproof rating
- Max 10Amp current output
- Max input voltage 50VDC
- High efficiency PWM charging
- Removable



50 Amp Connectors

- High quality
- Easy to use
- Prevents reverse polarity issues
- Includes connector to charging alligator clips



High Efficiency Monocrystalline panels

- 20.1% sunlight conversion efficiency
- Semi-flexible design
- Lightweight
- Super-thin 5mm panels



CHARGE CONTROLLER SPECIFICATIONS

Nominal System Voltage	12V/24V DC Auto Select	Standby consumption (mA)	<4.58(12V) - <6.01(24V)
Max Solar input voltage (V)	50	Temp compensation	Yes
Rated Current (A)	20	Waterproof Rating	IP67
Equalize Voltage (V)	14.8 (12V) - 29.6 (24V)	Dimensions (mm)	108.5 x 75 x 25.6
Boost Voltage (V)	14.4 (12V) - 28.8 (24V)	Mounting hole width (mm)	100.5
Float Voltage (V)	13.7 (12V) - 27.4 (24V)	Mounting hole diameter (mm)	5
Low Input voltage cut-out (V)	11.2 (12V) - 22.4 (24V)	Cable Dimension (mm2)	6
Low input voltage cut-in (V)	12.6 (12V) - 25.2 (24V)	Weight (g)	435

PANEL SPECIFICATIONS

Cell Type	Monocrystalline	Dimension of panel (mm)	515 x 395 x 5
Panel Config.	6 x 30W	Dimensions of full array open (mm)	2400 x 510 x 60
Peak Power (Pmax)	180Wp	Dimensions of full array folded (mm)	515 x 400 x 60
Conversion Efficiency	20.10%	Charging cable length (m)	2.5
Open circuit voltage Voc(V)	22.8	Weight (kg)	5.9
Max power voltage Vmp(V)	19.4	Cable Dimension (mm2)	6
Short Circuit Current Isc(A)	10		
Max power current Imp(A)	9.28		