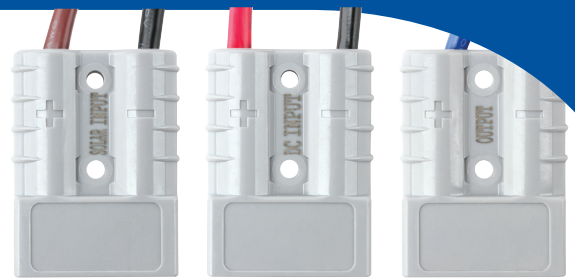


MA21DCS



20AMP DC-DC CHARGER WITH SOLAR INPUT

- 20 Amp charging
- Chemistry selectable
- Dual input alternator/solar
- IP65 under-bonnet suitable
- Suits smart and conventional alternators
- Factory fit 50Amp connectors for easy install



SPECIFICATIONS	
Charge Type	Multi-Stage
Input Voltage (V)DC	Battery 10.8 - 16.0
	Solar 13.5 - 25.0
Cut in/out Voltage with Ignition lead (V)DC	11.5 - 10.8
Cut in/out Voltage NO Ignition lead (V)DC	13.0 - 12.4
Output Current (A)	20
Minimum Start Voltage (V)DC	2
Soft Start Charging	Yes

BULK CHARGE VOLTAGES (V)DC			
Gel	14.3	Ingress protection (IP) rating	IP65
AGM/Lead Acid	14.7	Max operating temp (Deg C)	70
Calcium	15.3	Weight (KG)	1
LiFePO	14.4	Dimensions (MM)	135 x 207 x 37
Float Charge Voltage (V)DC	13.5		
Float Charge Current (mA)	100		
Suits battery capacity (AH)	18 - 250		
Case Construction	Aluminium		