



NEW PRODUCTS 2020

Edition 1



FUSE SAVER DIGITAL

- Professional unit designed to protect on-board computer systems and modules from current overload during electrical service
- Suitable for standard and mini fuse types
- Select up to 9 levels of protection
- Automatic current cut-off when selected value is exceeded
- Built in warning buzzer
- Supplied in custom moulded plastic hard case

Part No.	Capacity
302199	2A, 3A, 4A, 5A, 10A, 15A, 20A, 25A, 30A



BRAKE FLUID TESTER DIGITAL

- Professional brake fluid tester measures the boiling point of the brake fluid
- Digital LCD display provides brake fluid condition
- Heavy duty construction withstands most automotive fluids and chemicals
- Includes syringe and testing beaker
- Suitable for all dot brake fluids
- Wet boiling point is the reference temperature for changing the brake fluid
- Dry boiling point is the reference temperature for new brake fluid
- Supplied in custom moulded plastic hard case

Part No.	Voltage (power source)	Accuracy of the tester
310009	12V	±3°C @ <180°C ±5°C @ >180°C



BEARING SEPARATOR KIT MECHANICAL & HYDRAULIC

- Comprehensive bearing separator kit contains all the components for mechanical and hydraulic assembly
- Designed for removing stubborn bearings, gears, sprockets and pulleys effortlessly without damaging shaft and surrounding components
- Includes heavy duty 10 tonne hydraulic ram and 210mm forcing screw with centre nut, triple beam, various extension rods, puller leg set and three jaw bearing separator
- Suitable for automotive, industrial and engineering applications
- Manufactured from drop forged high grade steel, heat treated for strength and durability
- Supplied in two tier custom foam trays and heavy duty storage case
- Spare parts available



Part No.	Force	Spread (Max)	Reach (Max)	Separator Range
265015	10 Tonne	170mm	900mm	35 - 105mm

MECHANICAL SERVICE



WHEEL HUB CLEANER

- Cleans the surface of the wheel hub
- Removes corrosion and debris to ensure flush fitment of wheel surface
- Suitable for use with electric and pneumatic drills and impact wrench guns
- Safe to use on all wheel type hub surfaces



Part No.	Size	Square Drive
321078	Ø 150mm	1/2"



WHEEL HUB CLEANER KIT

8 PIECE

- Designed to clean corrosion on hub and wheel surfaces including wheel studs
- Quick change multi-head design with popular sizes for cleaning wheel studs and grinding wheel hub
- Includes 1/4" quick release style adaptor to suit both electric or pneumatic drills
- Safe to use on all wheel type hub surfaces
- Manufactured from heavy duty plastic resistant to most impact



Part No.	Brush Size	Grinding Pad Size	Square Drive
321204	13, 18mm	Ø 23mm x 3pcs, Ø 15mm x 2pcs	1/2"



TYRE TREAD DEPTH GAUGE

- Accurately measures tyre tread depth, shoulder wear and centre tyre line
- Pencil type with handy pocket clip for easy storage
- Black background with white and yellow marking provides excellent visibility when in use
- Calibrated with metric and imperial graduations
- Robust stainless steel with brass centre plunger for strength and durability
- Suitable for cars, motorcycles, light commercial and heavy vehicles



Part No.	Range	Length
309102	0 - 25mm	90mm



HEATER HOSE DECOUPLING TOOL

FORD

- Easily remove heater hose connector without damaging lock
- Simply slide it over the connector to release lock and turn
- Suitable for most Ford vehicles including Focus, Escape and Kuga EcoBoost etc



Part No.	Application
313430	Ford



BRAKE DISC REMOVAL KIT

- For the removal of stubborn brake discs and drums
- Reduces impact on wheel bearings, ball joints, suspension and electrical sensors
- Adjustable jaws allow 400mm spread (max.)
- Suitable for passenger and light commercial vehicles
- Heavy duty construction for long service life
- Supplied in custom moulded plastic hard case



Part No.	Capacity
310260	170 - 400mm



FLUID EXTRACTOR
MANUAL & PNEUMATIC 10 LITRE

- Designed to extract fluids easily and efficiently
- Handy for the extraction of engine oil via the dipstick
- Suitable for engine oil, transmission fluid, differential, brake fluid and hydraulic oils etc.
- Includes four various lengths and diameter suction tubes
- Adjustable flow rate switch with integrated pressure relief valve and storage hook for hose and tubes
- Heavy duty venturi system design provides excellent performance
- Manufactured from durable polypropylene construction

Part No.	Style	Capacity
305164	Manual & pneumatic	10 litres

Spare Part No.	Description	Size	Length
305164A	Gear oil tube	Ø 10mm	400mm
305164B	Dipstick tube - Blue	Ø 6mm	735mm
305164C	Dipstick tube - Black	Ø 7mm	860mm
305164D	Nylon suction tube	Ø 6mm	720mm
305164E	Main hose	Ø 10mm	1500mm



TORQUE BAR & DEEP SOCKET SET
8 PIECE

- Professional set to accurately torque wheel nuts to correct specifications
- Having the wheels set at the correct torque will prevent distortion of the wheels and surrounding components with added security
- Thin wall with protective polypropylene sleeve ensures wheel surface is damage free
- Colour coded anodized pieces to conveniently identify the required torque bar and socket
- Knurled aluminium ring provides no-slip grip
- Deep impact sockets suitable for use with impact wrench
- Manufactured from chrome molybdenum for strength and durability
- Supplied in custom foam tray inlay and plastic hard case



Part No.	Size	Torque Bar	Square Drive
309512	17, 19, 21, 22mm	65, 80, 100, 120ft.lbs (90, 110, 135, 160Nm)	1/2"



FUEL LINE CAP NUT SET
12 PIECE

- Seals fuel lines and components from debris and contamination during service or repairs
- Universal application suitable for high pressure pumps, fuel lines, injectors, fuel rails etc
- Suitable for common rail diesel and direct injection petrol engines
- Supplied in custom moulded plastic hard case



Part No.	Contents
307351	6 x M12 x 1.50 and 6 x M14 x 1.50

MECHANICAL SERVICE



COOLING SYSTEM FLUSHING GUN PNEUMATIC

- Provides high pressure cleaning of radiators and heater cores
- Simply connect air line and water supply and pull trigger
- Essential tool for complete flush of cooling system from old coolant, dirt, rust and scale



Part No.	Stepped Cone Size	Operation Pressure	Air Inlet Size
308239	Ø 19, 29, 32, 37, 40mm	90psi	1/4" BSP



LOW PROFILE DRAIN PAN

- Low profile drain pan suitable for automotive fluids such as engine oil, coolant, brake fluid, transmission oil, petrol and diesel fuel, etc
- Removable splash screen grill and recessed castors provide easy mobility and transportation
- Drain plug provides easy dispensing of waste fluid
- Suitable height for work under motorcycles and ATV's
- Manufactured from polyethylene plastic for strength and durability



Part No.	Dimensions	Capacity
305089	850 x 600 x 125mm	20L



BRAKE & TYRE MEASURING TOOL

- Multi-function tool for accurate measurement of disc rotor, brake pad thickness and tyre tread wear without removing wheel
- Stoppers to record readings
- Easy to read display
- Suitable for passenger, 4WD and light commercial vehicles
- Manufactured from high grade aluminium for long service life



Part No.	Tyre Treads Range	Brake Measuring Range
310019	0 - 25mm	10 - 60mm



COOLING SYSTEM PRESSURE TEST KIT UNIVERSAL

- Universal cooling system pressure tester
- Diagnose overheating issues, head gasket leakage, loss of coolant, heating and cooling faults
- Suitable for radiators with bayonet style filler necks and screw on cap expansion tank style
- Hand pump provides a maximum of 35psi of pressure
- Rubber protector case on gauge prevents damage
- Manufactured from aluminium for long service life
- Contains 1 universal with 3 rubber adaptor rings, 3 bayonet caps and 1 thermometer
- Supplied in custom moulded plastic hard case

Part No.	Size Range
308370	Ø 30.3 - 44.0mm

MECHANICAL SERVICE



WHEEL BEARING LOCK NUT SOCKET

- Octagon 8 point 4 1/8"
- Removes and installs wheel bearing hub lock nut
- Suitable for trucks and heavy vehicles
- Heavy duty construction
- Manufactured from high strength steel tube
- New size addition - see website for full size range

Part No.	Size	Square Drive
309043	4 1/8"	3/4"



WHEEL LOCK NUT REMOVAL KIT
14 PIECE

- Professional tool kit designed for removing wheel lock nuts on most factory and aftermarket wheels without causing damage
- Conical shaped design allows sockets to fit firmly over the lock nuts
- Includes punch set for installation and removal
- Knurled punches provide additional grip during use
- Suitable for use with impact wrench or breaker bar
- Heavy duty construction for strength and durability
- Supplied in custom moulded foam tray in plastic hard case

Part No.	Size Range (Internal diameter)
309250	19.4, 20.4, 21.4, 22.4, 23.4, 24.4, 25.4, 27.8, 28.8, 29.8mm



WHEEL LOCK NUT REMOVAL SET

10 PIECE

- Designed for removing wheel lock nuts
- Internal conical shaped socket grips over the lock nut
- Suitable for use with impact wrench or breaker bar
- Deep sockets 60mm
- Includes 2 punches
- Manufactured from chrome molybdenum
- Supplied in custom moulded plastic hard case



Part No.	Size Range (Internal Diameter)
309407	18.5 - 15.6, 19.5 - 17.6, 20.4 - 18.5, 21.6 - 19.7, 22.5 - 20.6, 23.6 - 21.7, 24.5 - 22.6, 25.5 - 23.6mm



WHEEL LOCK SOCKET & BIT MASTER SET

16 PIECE

- Professional tool set for removing locking wheel nuts
- Universal master set suitable for various factory and aftermarket wheels
- Contains 9 socket style and 7 bit style keys
- Dual hex drive suitable for use with 21mm or 22mm socket
- Manufactured from heat treated chrome vanadium steel for strength and durability
- Supplied in custom moulded plastic hard case



Part No.	Hex Drive	Pieces
309249	21 or 22mm	16

Contents

Style	Size
	Spline 12 pt 11/16"
	Spline 6 pt 41/64"
	Spline 6 pt 45/64"
	Star 9 pt 1/2"
	Fluted hex 12mm
	Hex 12mm
	Hex 9/16"
	Star 8 pt 5/8"
	Spline 7 pt 5/8"
	Spline 5 pt 5/8"
	Spline 7 pt 11/16"
	Star 10 pt 1/2"
	Star 8 pt 7/16"
	Hex 15mm
	Spline 12 pt 13/16"
	Spline 7 pt 3/4"

MECHANICAL SERVICE



311069



311070



311071

BALL JOINT PULLER

- Heavy duty pullers for the removal of stubborn or seized ball joints
- Suitable for use with impact wrench
- Universal tool applicable for passenger and commercial vehicles
- Also suitable for removing ball joints on track rod ends, steering knuckles etc.
- Manufactured from chrome molybdenum

Part No.	Description	Jaw Opening	Capacity
311069	Ball Joint Puller - Window type	30mm	60mm
311070	Ball Joint Puller - Window type	32mm	92mm
311071	Ball Joint Puller - Window type	39mm	60mm



305214



305264



OIL MEASURING CONTAINERS

- Detachable flexible spout and cover lid for easy pouring
- Ideal for efficiently topping up fluids under bonnet
- Suitable for engine oil, transmission oil, coolant and non-corrosive liquids
- Dual scale litres and quarts
- Manufactured from translucent high density polyethylene
- Temperature rating: 60°C (Max.)



Part No.	Capacity	Spout Length
305214	1L	180mm
305264	5L	180mm



245500



245501



245502



245503

UNIVERSAL JOINT PULLERS

- Professional tool for removing universal joints on tail shafts
- Dismantles safely without impact or excessive force preventing distortion to the flange
- Universal tool suitable for passenger, light commercial and heavy vehicles including tractors and stationary plants
- Essential tool for repairing and servicing tail shafts
- Manufactured from heavy duty steel for superior strength



Part No.	Description	Size Range (O.D)
245500	Universal Joint Puller - Small	1.0" to 1.25" (25.40 to 31.75mm)
245501	Universal Joint Puller - Medium	1.25" to 1.7" (31.75 to 43.18mm)
245502	Universal Joint Puller - Large	1.5" to 2.2" (38.10 to 55.88mm)
245503	Universal Joint Puller - Extra Large	Dana/Spicer SPL 350 and Meritor or RPL 35 Series drivelines



RATCHETING GEAR PULLER QUICK CHANGE - TWIN & TRIPLE

- Designed for removing gears, sprockets and pulleys etc.
- Convert from internal to external and 2 to 3 leg configuration with it's special design quick change ratcheting mechanism
- Manufactured from drop-forged chrome molybdenum steel for strength and durability
- Supplied in heavy duty custom moulded storage case



Part No.	Reach	Spread	Capacity
225050	100 & 170mm	150 - 220mm	5 tonnes

MECHANICAL SERVICE



OIL FUNNEL MASTER KIT

14 PIECE

- Professional kit to accurately fill engine oil without spillage
- Highly recommended for vehicles with internal baffles in oil filler necks
- Includes angled and extension neck for access in confined engine bays
- Anti-static funnel manufactured from heavy duty polyurethane
- Adaptors create a tight seal and holds funnel firm
- Applicable for most vehicles on the Australian car parc including Toyota, Ford, Mazda, Honda, Holden, Audi, VW etc



Part No.	Capacity	Pieces
310420	2 Litre	14



SANDBLASTING GUN

PNEUMATIC 1 LITRE

- Effective way of removing contaminants on surfaces such as rust, paint or lacquer
- Suitable for automotive and industrial applications
- Supplied with adjustable steel nozzle to control output flow rate
- Suitable for use with walnut shells, aluminium oxide or any appropriate abrasive media
- Manufactured from heavy duty polyurethane with steel head



Part No.	Working Pressure	Inlet	Nozzle Length
305166	87 - 145 psi (6 - 10 bar)	1/4"-18NPT	88mm



COOLANT FUNNEL SET

UNIVERSAL 13 PIECE

- Professional coolant filling kit designed to reduce air locks during refilling
- Accurately refill coolant without spillage
- Suitable for most Japanese, European, Hyundai and KIA vehicles with petrol and diesel engines
- Manufactured from heavy duty materials resistant to coolant and most workshop solvents
- Supplied in custom moulded foam tray in plastic hard case



Part No.	Funnel Capacity	Pieces
305076	2 Litre	13

Contents

Description	Image	Description	Image
Funnel		European adaptor seal - 42mm	
Universal adjustable adaptor		European adaptor seal - 45mm	
Universal conical adaptor seal		Suits Japanese & American vehicles	
European adaptor seal - 31mm		Suits Korean vehicles Hyundai & KIA	
European adaptor seal - 35mm		Suits Honda & Toyota vehicles	
European adaptor seal - 40mm		Suits Mitsubishi, Nissan, Mazda & Ford	

MECHANICAL SERVICE



OIL FILTER WRENCH TOOL FORD

- Essential tool for removing oil filter housing
- Articulated design allows you to clear any obstruction in engine bay during removal
- Applicable to Ford Duratorq 2.0 TDI, 2.2 TDCI, Citroen & Peugeot 2.2 HDI, 2.0 HDI and Jaguar XF 2.2D
- Equivalent OEM: 303-1579



Part No.	Size	Square Drive
305915	27mm	1/2"



OIL FILTER WRENCH TOOL HOLDEN/GM

- Essential tool for removing oil filter housing
- Articulated design allows you to clear any obstruction in engine bay during removal
- Applicable to Holden/GM 2.0L & 2.2L engines with A and Z codes
- Equivalent OEM: KM-6150

Part No.	Size	Square Drive
305916	32mm	1/2"



BALL JOINT PULLER HYDRAULIC

- Specialty tool designed for removing stubborn ball joints while minimising damage to other components
- Hydraulic operation makes light work of the most difficult jobs
- For passenger, 4WD and light commercial vehicles
- Accessible to multiple sized ball joints
- Manufactured from heavy duty hardened steel for long service life
- Supplied in custom moulded plastic hard case

Part No.	Jaw Opening	Fitment Range	Capacity
311302	25 & 32mm	60 - 72mm	7 Tonne



DRUM MEASUREMENT CALIPER DIGITAL 300MM

- Internal jaws accurately measure brake drum liner for wear
- External jaws accurately measure brake disc, pads and drum shoes
- Features locking screw for firm fixation and micro adjustment sliding carriage
- Hardened stainless steel frame and jaws for strength and durability
- Large LCD screen with metric and imperial read out
- Includes calibration certificate
- Supplied in plastic storage case
- Battery included



Part No.	Range	Accuracy
310253	0 - 300mm	±0.03mm/0.001in



BLENDING HAMMER & TAP DOWN TOOL KIT

- Designed for blending and manipulating panels
- Suitable for painless dent repairs
- Manufactured from high grade aluminium for light weight and durability
- Ergonomic handle with storage space for tips
- Includes 4 changeable tips



Part No.	Tips	Overall Length
313089	Sharp tip, mushroom head tip, blunt tip, ball tip	300mm

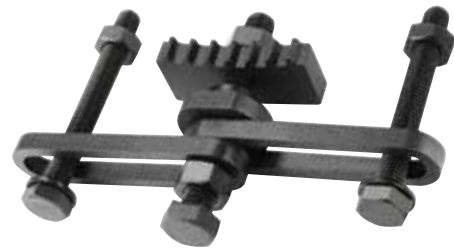


TIMING GEAR HOLDER
UNIVERSAL

- Holds timing gear without damage and allows adjustment of timing during service or repair
- Three position for locking arm and adjustable locking peg with quick lock lever
- Universal to suit most sprocket size
- Suitable for holding sprocket to remove or tighten centre bolt
- Manufactured from heat treated steel with non-slip PVC grip



Part No.	Size Range	Length (Max.)
304200	50 - 150mm	380mm



FLYWHEEL LOCKING TOOL
HYUNDAI/KIA

- Suitable for popular Hyundai/KIA petrol engines
- For the locking of the flywheel (crankshaft) during the removal and installation of the engine timing belt, chain and other engine service and repairs
- Equivalent to OEM part number 09231-2B100



Part No.	Applications
304787	Hyundai/Kia



TIMING TOOL KIT
VW CAMSHAFT FITTING TOOL

- Suitable for popular Volkswagen, Audi, Skoda and Porsche models covering 1.6 - 4.2 TDI engines
- Essential kit designed for reassembling and aligning camshafts in cylinder head during service and repairs
- Contains all the required holding and aligning tools for refitting camshaft
- Equivalent OEM: T40094, T40095, T40096
- Supplied in custom moulded foam tray in plastic hard case



Part No.	Applications
304777	Volkswagen, Audi, Skoda & Porsche

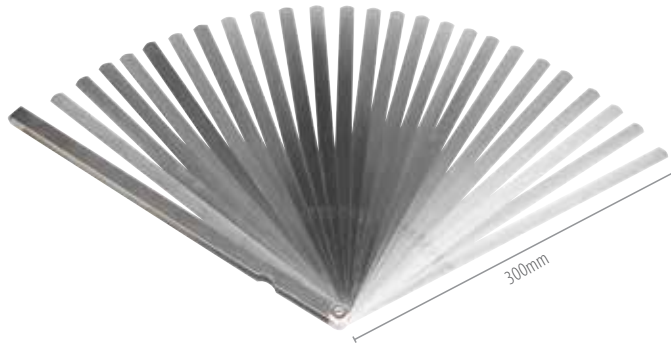


TIMING TOOL KIT

- Suitable for popular Ford Territory 2.7L TDI diesel engine applications
- For locking and alignment of the camshafts, crankshaft and tensioner during removals and installation of the engine timing belt and other engine servicing and repairs
- Supplied in custom foam tray in heavy duty steel case

Part No.	Application		
304786	Make & Model	Engine	Year
	Ford Territory (SZ)	2.7L (276DT)	2011 - 2016

WORKSHOP GENERAL



FEELER GAUGE EXTRA LONG METRIC & IMPERIAL 300MM/12"

- Extra long feeler gauge designed to accurately measure small gaps in hard to reach places
- Laser etched size marking and adjustable lock out nut for stabilising
- Metric and imperial measuring units
- Suitable for automotive, engineering and manufacturing etc
- Manufactured from heavy duty spring steel
- 25 blade

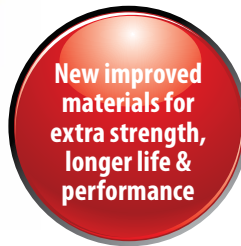
Part No.	Blade Size: Metric (Imperial)				
321669	0.038mm (0.0015")	0.152mm (0.006")	0.279mm (0.011")	0.406mm (0.016")	0.533mm (0.021")
	0.051mm (0.002")	0.178mm (0.007")	0.305mm (0.012")	0.432mm (0.017")	0.635mm (0.025")
	0.076mm (0.003")	0.203mm (0.008")	0.330mm (0.013")	0.457mm (0.018")	0.686mm (0.027")
	0.102mm (0.004")	0.229mm (0.009")	0.356mm (0.014")	0.483mm (0.019")	0.762mm (0.030")
	0.127mm (0.005")	0.254mm (0.010")	0.381mm (0.015")	0.508mm (0.020")	1.016mm (0.040")



301627



301615



PUNCH SETS LETTER & NUMBER

- Letter punch sets suitable for automotive and industrial applications
- Long shank for safety and stability
- Letter punch set contains upper case letters featuring "A-Z" and "&" symbol
- Number punch set contains numbers "0 - 9" (6/9 reversible)
- Applicable for most metal surfaces, including wood and plastic
- Compact sets supplied in plastic storage case
- Manufactured from hardened chrome vanadium steel with special sand blasting finish



Letter punch set Letters "A to Z" and "&" symbol		
Part No.	Punch Size	Pieces
301626	Ø 3.0mm (1/8")	27
301627	Ø 5.0mm (3/16")	27
301628	Ø 6.0mm (1/4")	27
301629	Ø 8.0mm (5/16")	27
301630	Ø 10.0mm (3/8")	27

Number punch set Numbers "0-9" (6/9 reversible)		
Part No.	Punch Size	Pieces
301615	Ø 3.0mm (1/8")	9
301616	Ø 5.0mm (3/16")	9
301617	Ø 6.0mm (1/4")	9
301618	Ø 8.0mm (5/16")	9
301619	Ø 10.0mm (3/8")	9



PROFESSIONAL TYRE UNIT

- Safely removes valve core and rapidly inflates tyres
- Knurled valve core remover provides non slip grip
- Reduces inflation/deflation time of commercial vehicle tyres
- Eliminates the risk of serious injuries from tyre valve core under pressure
- Universal tool suitable for most tyres



Part No.	Size	Overall Length
309242	8mm	140mm



HOSE REMOVAL PLIERS SCREW LOCK TYPE

- Designed to easily remove hose from tubes or lines without damage
- Suitable for 3/16", 1/4" and 3/8" tubes
- Pointed jaws allows access in confined space
- Locking design secures grip
- Ergonomic handle provides a non-slip grip



Part No.	Overall Length
301708	157mm

HOSE CLAMP PLIERS CHANGEABLE
ADJUSTABLE, 3 PIECE

- Designed for the removal and installation of various style hose clamps
- Flexible cable allows extra reach for difficult and hard to reach applications
- Includes 3 different hose clamp heads
- Quick and easy interchangeable heads
- Ratcheting and locking mechanism secures clamp while manoeuvring
- Ergonomic handle features non-slip grip finish
- Spring loaded heads enables fast releasing action



Part No.	Size Range	Pieces
301709	0 - 75mm	3



DIESEL INJECTOR PORT CLEANING KIT

- Cleans injector ports and seats prior to new injector installation
- Features reusable plugs to prevent contaminants and debris from falling into cylinders during intensive cleaning process
- Includes various size brushes and attachments for deep cleaning
- Removes carbon build up and baked on debris
- Heavy duty cleaning kit applicable for passenger, commercial and plant diesel engines
- Supplied in custom moulded plastic hard case



Part No.	Contents	Qty
304052	Wire brush - Ø 18mm	1
	Wire brush - Ø 19mm	1
	Wire brush - Ø 21mm	1
	Wire brush - Ø 24mm	1
	Wire brush - Ø 26mm	1
	Deep cleaning brush - 9 x 100 x 300mm	2
	Flexible bit holder	1
	Brush holder adaptor	1
	Sealing plug rod	1
	Twisted wire brush	2
	Sealing plugs	8
	Brush sleeve	1
	Abrasive discs	9
	Adaptor	1



WORKSHOP GENERAL



DIESEL INJECTOR WRENCH SET

FLEXIBLE HEAD, 6 PIECE

- For removing stubborn diesel injectors in difficult positions
- Adjustable flexible head up to 220° of movement
- Single hex profile provides maximum grip without damaging or distorting the nut
- Suitable for fuel lines in limited space
- Manufactured from hardened steel with black phosphate finish
- Supplied in custom moulded plastic hard case



Part No.	Size	Square Drive
304049	12 x 110mm, 14 x 115mm, 16 x 125mm, 17 x 125mm, 18 x 125mm, 19 x 125mm	3/8"



O-RING PICK SET

MINI LIGHT DUTY 3 PIECE

- Manipulate O-rings, seals and gaskets on delicate tasks without marking
- Six different tip styles
- Manufactured from nylon fibres
- Lightweight and durable
- Supplied with vinyl wallet



Part No.	Overall Length	Pieces
313314	185mm	3



SILICONE REMOVER

- Professional tool to easily remove and clean cured silicone
- Suitable for all types of surfaces including glass windows, tiles, ceramic sinks etc.
- Special composite material will not damage surface when in use
- Safe and efficient way of removing silicone without chemicals
- Push and pull motion suitable for confined areas



Part No.	Size (L x W x D)	Overall Length
301557	212 x 34 x 25.5mm	212mm



DIESEL FUEL LINE SOCKET SET

3 PIECE

- Specialty tool designed for removing diesel high pressure fuel lines
- 12 point bi-hex sockets ensures a secure grip on stubborn fuel lines
- Suits most diesel fuel lines
- Manufactured from heavy duty chrome vanadium steel for strength and durability
- Supplied on socket rail for storage



Part No.	Size	Square Drive
304051	14, 17, 19mm	1/2"



CLAMPING WASHER TOOL

- Specialty tool for the removal and installation of clamp washers found on undercarriage heat shields
- Prevents damaging the heat shields upon removing
- The two pins are designed to engage onto the 32mm diameter washer
- Suitable for VAG and Ford vehicles
- Quick release 1/4" shank



Part No.	Shank Square Drive
321802	1/4"

WORKSHOP GENERAL



**SEAL & O-RING
REMOVAL TOOL SET**
4 PIECE

- Suitable for removing O-rings and seals in automotive, engineering and industrial applications
- Combination spoon and contoured tips allow controlled manoeuvring without damaging surface
- Manufactured from chrome vanadium steel with black phosphate finish for strength and durability
- Oil resistant ergonomic handle

Part No.	Overall Lengths
321800	130 & 200mm



EXTREME EDGE TOOL
5 PIECE

- Unique extreme edge design scrapers for removing gasket and sealants
- Suitable for removing trims and badges on panels
- Push and pull motion enables use in difficult and hard to reach areas
- Safe to use on glass, metal, plastic and painted surfaces
- Non metallic tips will not damage surface
- Built in hang hole for storage
- Manufactured from heavy duty nylon

Part No.	Overall Length
313312	178mm



WEDGE TOOL KIT
12 PIECE

- Suitable for re-forming panels without damaging paint work
- Interchangeable tips to accommodate various dents
- Includes two knurled aluminium handles and two piece strike plates
- Manufactured from durable polyurethane
- Supplied in custom moulded plastic hard case



Part No.	Pieces
313319	12

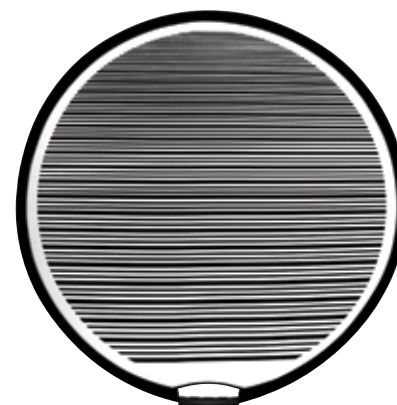


WHEEL GRINDER DRESSER

- For exposing sharp new cutting surface
- True wheels for flat surfaces
- Six heavy duty hardened star tooth wheel cutters
- Suitable for most types of grinder wheels
- Large steady tabs for resting the tool on grinder
- Ergonomic handle for stability
- Manufactured from cast iron



Part No.	Overall Length	Cutting Size
301707	157mm	#0



PDR LINE BOARD
FLEXIBLE 800MM

- Excellent visual aid for professional paintless dent repairs
- Portable and folds out in seconds
- Suitable for inspecting small and large dents
- Folds from 800mm to 300mm



Part No.	Size
313088	800 to 300mm

WORKSHOP GENERAL



DRUM BRAKE SPRING WASHER PLIER

- Removes and installs drum brake spring washer
- Unique design with grooved cup allows use where in tight space
- Suitable for various brake drum system including passenger and commercial vehicles
- PVC dipped handle provide comfortable and maximum grip
- Manufactured from heat treated steel for strength and durability



Part No.	Sizing	Overall Length
310254	8 - 20mm	180mm



WHEEL STUD THREAD RESTORER KIT 8 PIECE

- Professional tool kit for the restoration of damaged threads on wheel studs and bolts including bolt holes
- Unique design allows two halves of the thread restorer to be applied on the good thread and wound over the damaged threads
- Includes spare retaining bands
- Manufactured from heavy duty steel for strength and durability
- Supplied in custom moulded foam tray in plastic hard case



Part No.	Die Size	Tap Size
309406	M12 x 1.25mm, M12 x 1.50mm, M14 x 1.50mm	M12 x 1.25mm (psa), M12 x 1.50mm, M12 x 1.75mm, M14 x 1.50mm



BOLT CUTTERS PROFESSIONAL HEAVY DUTY

- Professional range of bolt cutters feature extra heavy duty jaws manufactured from special chrome-molybdenum steel for extra durability and reliable ongoing use
- Jaws can be adjusted by loosening nuts and rotating cam bolts
- Slim head centre cut jaw design enables close surface cutting
- Suitable for general purpose use with soft and medium applications
- Replacement jaws available



Part No.	Soft Metal	Medium Metal	Overall Length	Spare Jaws (Pair)
316002	8mm (5/16")	6mm (1/4")	450mm	316002A
316004	13mm (1/2")	8mm (5/16")	750mm	316004A
316005	16mm (5/8")	10mm (7/16")	900mm	316005A



WORKSHOP GENERAL



PLASTIC OIL PLUG DRIVER SET
5 PIECE

- Designed for removing and installing plastic type sump plugs
- Includes four adaptors and T-handle
- Suitable for Volkswagen, Audi, BMW, Peugeot, Citroen and Ford
- Supplied in plastic hard case with foam in-lay
- Replacement plastic engine sump plugs also available



Part No.	Square Drive	Pieces
305997	3/8"	5



OIL PAN SEPARATOR & CLEANING KIT
20 PIECE

- Specialty kit for separating oil sumps without damaging the surface
- Prevents the oil sump from warping during removal
- Includes two sump cutting blades with hex wrench, cleaning pad adaptor and 15 abrasive cleaning pads
- Supplied in custom moulded plastic hard case
- Replacement pads available



Part No.	Contents	Qty	Contents	Qty
321801	Sump cutter - SK5	1	Hex wrench	1
	Sump cutter - copper	1	Cleaning pad adaptor	1
	Sump cutter adaptor	1	Cleaning pads	15



CROWFOOT WRENCH SET - METRIC
FLEXIBLE HEAD, FLARED JAW, 12 PIECE

- Metric flexible flare type crowfoot wrench set suitable for automotive, industrial and engineering applications
- Flexible head allows 200° of movement
- Suitable for hydraulic, fuel, air and brake fluid lines to avoid rounding the nut
- Flared jaw provides excellent grip and avoids damaging the nut
- Ideal for confined areas where there is limited access for standard sockets or spanners
- Manufactured from heavy duty chrome vanadium steel
- Supplied in custom moulded plastic hard case



Part No.	Size	Square Drive
321265	8, 9, 10, 11, 12, 13, 14, 15, 16, 17, 18, 19mm	3/8"



AUTO FLEXING LINE SOCKET SET
6 PIECE

- Specialty tool for loosening or tightening fuel line nuts
- Universal sockets suitable for hydraulic, fuel, air lines etc.
- Double joint design allows flexible angle of 45°
- Manufactured from heat treated S50C steel with black phosphate finish
- Supplied in custom moulded plastic hard case



Part No.	Size	Square Drive
304599	11, 13, 14, 15, 17mm	3/8"

MEASURING & PRECISION



ENGINEERING SQUARES HIGH PRECISION

- High precision squares are manufactured to equivalent Japanese industrial standard JIS B 7526
- The professionals choice for high quality, precision and accuracy
- Manufactured from high grade Japanese carbon steel (S50C)
- Made in Japan



Part No.	Style	Blade Length
321115	Non-Graduated	50mm
321116	Non-Graduated	75mm
321117	Non-Graduated	100mm
321118	Non-Graduated	150mm
321119	Non-Graduated	200mm
321120	Non-Graduated	250mm
321121	Non-Graduated	300mm



TAPER GAUGES STAINLESS STEEL

- Extended range of Toledo taper gauges
- Used to measure internal diameters. Ideal for measuring gaps, slot widths, hole or bore sizes and flange face to face dimensions
- Photographically etched markings ensure the greatest precision and accuracy
- Satin chromed for easy reading and identification
- Accuracy: $\pm 0.05\text{mm}$
- Manufactured from stainless steel
- Made in Japan



Part No.	Description	Size
700A	Taper Gauge	1 - 15mm
700B	Taper Gauge	15 - 30mm
700C	Taper Gauge	30 - 45mm
700D	Taper Gauge	45 - 60mm