

HYDRAULIC PULLERS

HYDRAULIC RAM 10 TONNE

- Famous Toledo hydraulic ram is a premium option well known for its quality and reliability
- A cornerstone of the brand and pulling range
- Supplied in custom moulded EVA foam storage tray
- Repair kit available Part No. 265001



1 Heavy duty 130mm T-bar ensures maximum power output with minimal effort

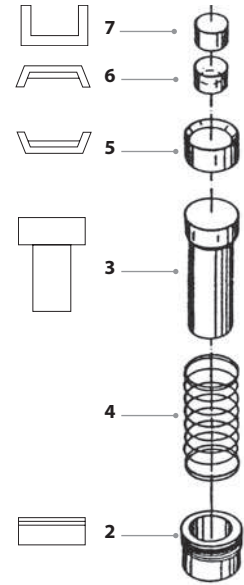
Pressure screw with finely pitched thread ensures seamless operation

Knurled collar improves grip when positioning ram and applying initial load

1 1/2" – 16 TPI offers precise adjustment to obtain maximum force

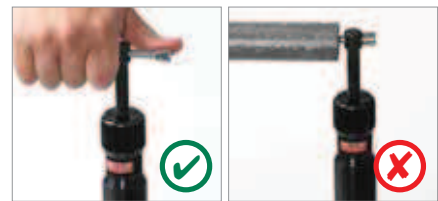
Heavy duty body construction applies direct force which eliminates twisting and improves stability under load

10 Tonne of force ensures light work of the hardest application



Reference

- 1 T-Bar
- 2 Threaded Nose Retainer
- 3 Piston
- 4 Spring
- 5 Large Tapered Seal
- 6 Small Tapered Seal
- 7 T-Bar Seating Positioner Cup
- 8 Ram Body



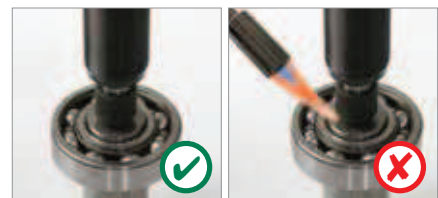
Hand operation only should be used to achieve force



Maintain hydraulic ram to ensure maximum performance



Misalignment of ram can cause damage to tool and shaft



Heating up bearing will cause heat to transfer and damage tool

Part No.	Description	Repair Kit Part No.
265100	Hydraulic Ram 10T	265001

REPAIR KIT INSTRUCTIONS

Step 1

Unwind T-bar completely and remove it from ram

Step 2

Remove threaded nose retainer and drain oil from ram

Step 3

Using a screwdriver, force out internal components of ram by inserting it into the threaded T-bar hole

Step 4

Inspect and clean all internal components

Step 5

With the T-bar hole facing down, half fill the T-bar seating positioner cup with general-purpose grease and carefully insert into ram

Step 6

Insert small tapered seal, with the rubber seal facing up, into the chamber

Step 7

Refill ram with supplied hydraulic oil until level is slightly above the larger chamber

Step 8

Insert large tapered seal, with the rubber seal facing down, into chamber

Step 9

Insert piston and spring into chamber and refit threaded nose retainer

Step 10

Refit T-bar to ram

NOTE: If an air lock occurs during assembly, use a short length of fishing line by inserting it into the cut out of the large tapered seal and pull out slowly to draw bubbles to surface and then reassemble.